

aci

inspired workspaces



Westrock Office Fit-Out

North Hyde Gardens, Hayes



Constructionline
Gold Member



Accredited Contractor
CHAS.co.uk

0845 241 6722 | www.aci.uk.net | sales@aci.uk.net
© Copyright Advanced Commercial Interiors Limited (aci TM)



aci

Inspired workspaces



Timescale

8 Months On Site

Mezzanine

105 SQM

Office Fit-Out

300 SQM

Project Value

£1.5 Million



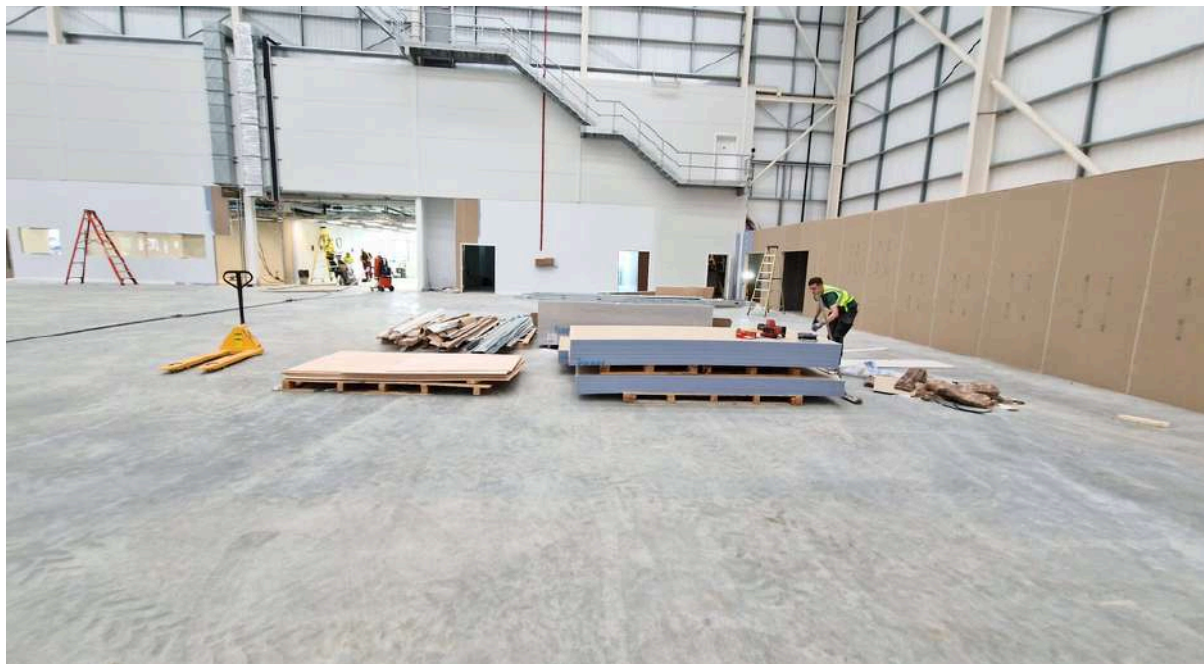
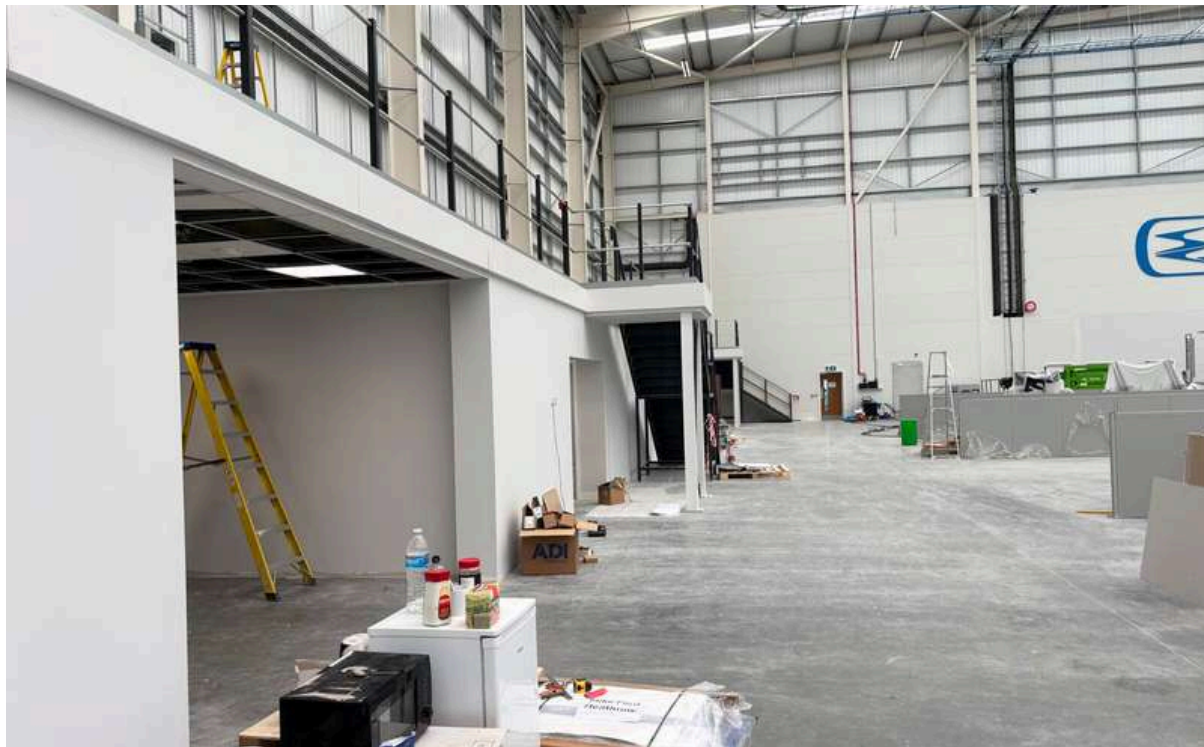
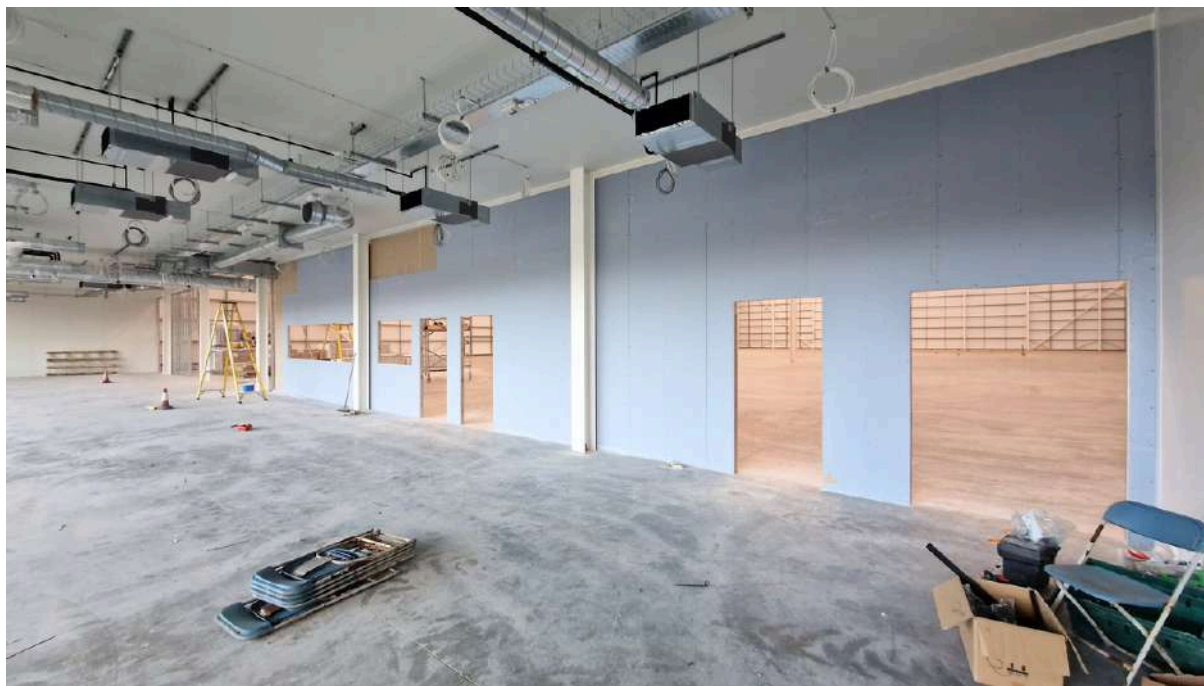
PROJECT OVERVIEW

A full office fit-out was delivered across two floors, starting with the design of a new office layout.

The works included the installation of solid and glazed partitions with branded manifestations, folding walls, and various flooring throughout. A new suspended ceiling was installed, along with new furniture and a modern tea point. Mechanical services were modified to suit the revised layout.

Additionally, a 105 sqm mezzanine floor was constructed in the warehouse to increase usable space.

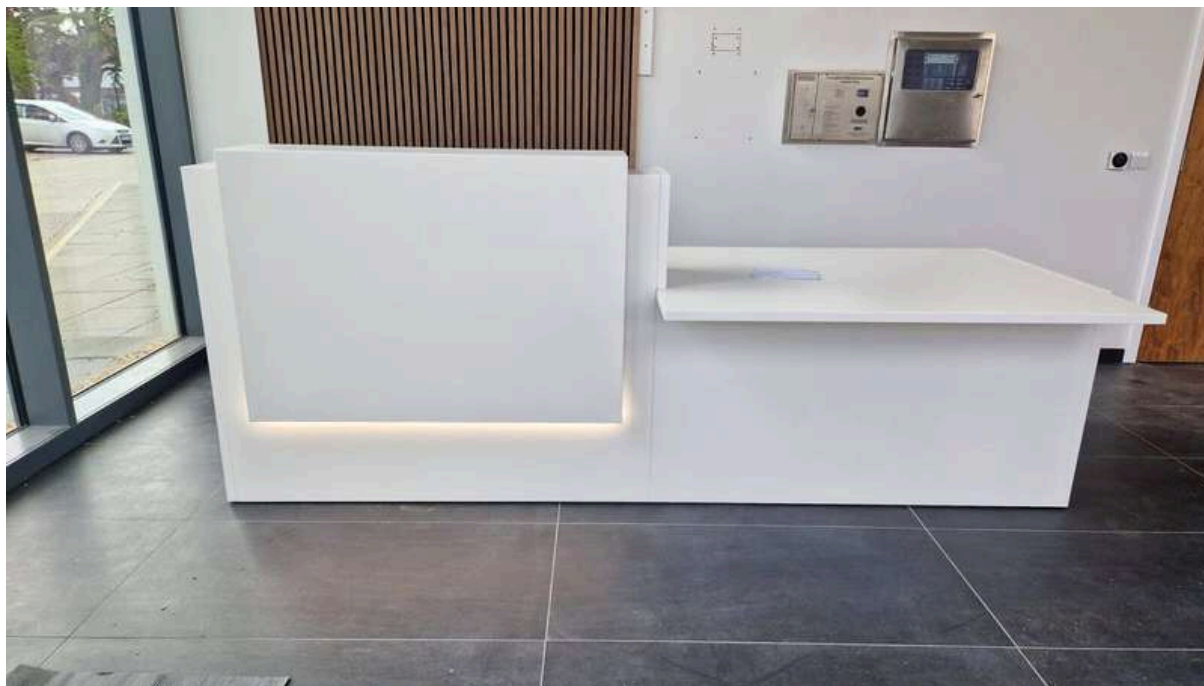




PROJECT CHALLENGES

Ever growing scope of works as the clients brief evolved due to the expanding business needs and employees which needed to be including into the existing project program.

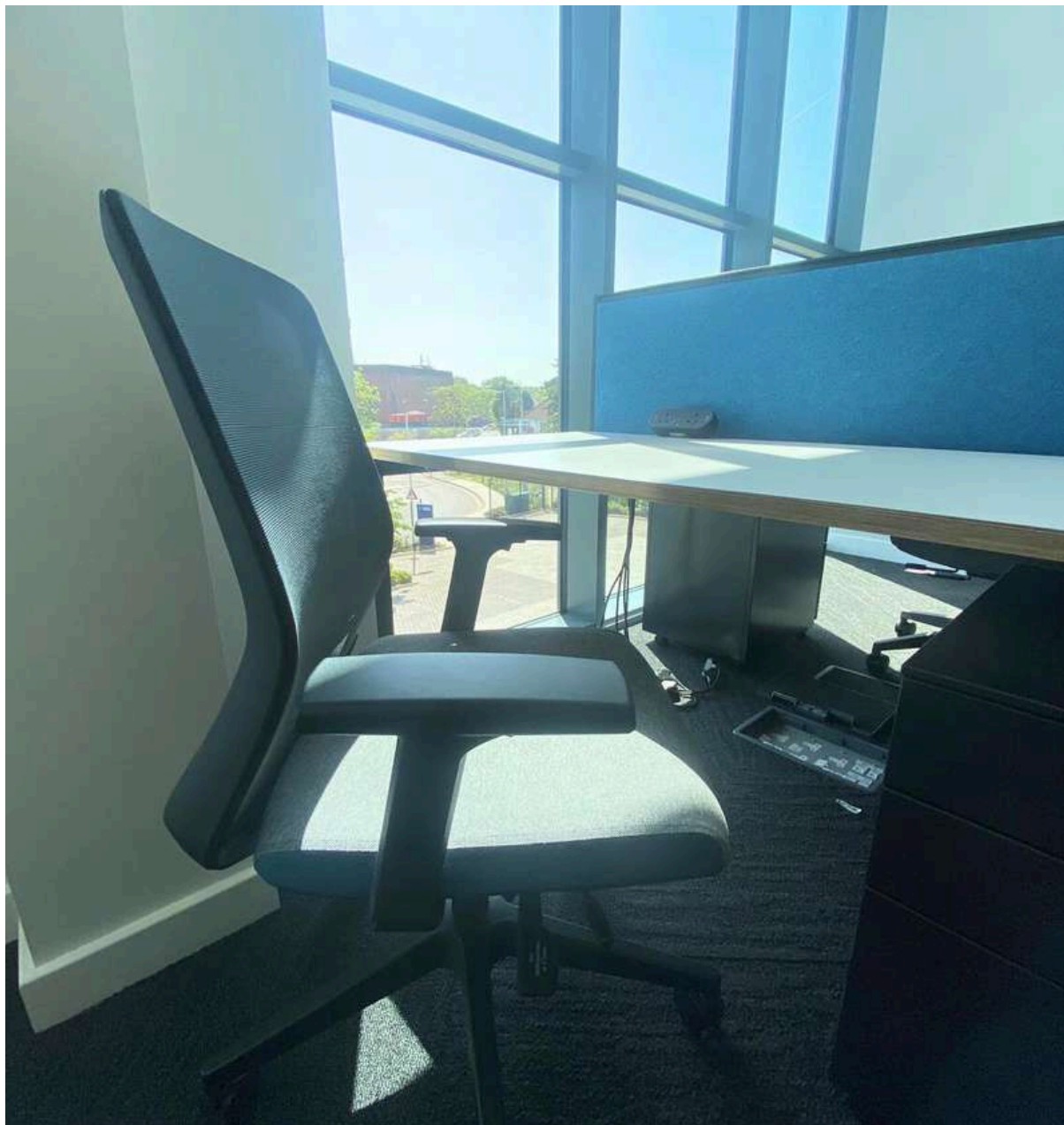
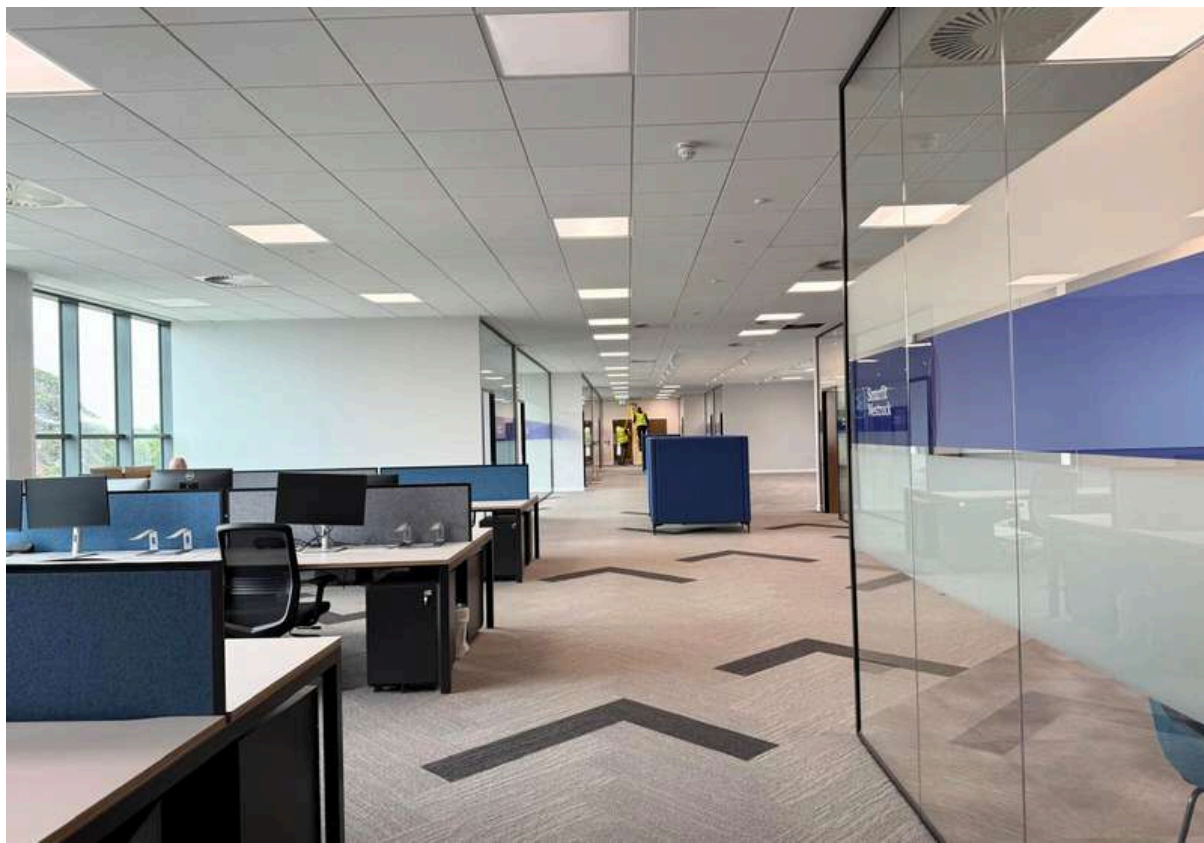
There was large machinery in place during the build, so we worked alongside the client to ensure a smooth project was completed.



FURNITURE OVERVIEW

We supplied and installed various specifications of furniture throughout the first floor along with the ground floor training rooms and welfare areas for the warehouse staff.

We also supplied and delivered a reception desk with DDA approved wheelchair access



Finished Fit Out



Finished Fit Out