

aci

inspired workspaces



Leviat Office Fit-Out

Units 3&4 and Units 5&6, Sheffield



Constructionline
Gold Member



Accredited Contractor
CHAS.co.uk

0845 241 6722 | www.aci.uk.net | sales@aci.uk.net

© Copyright Advanced Commercial Interiors Limited (aci TM)



Timescale

5 Months On Site

Office Fit Out

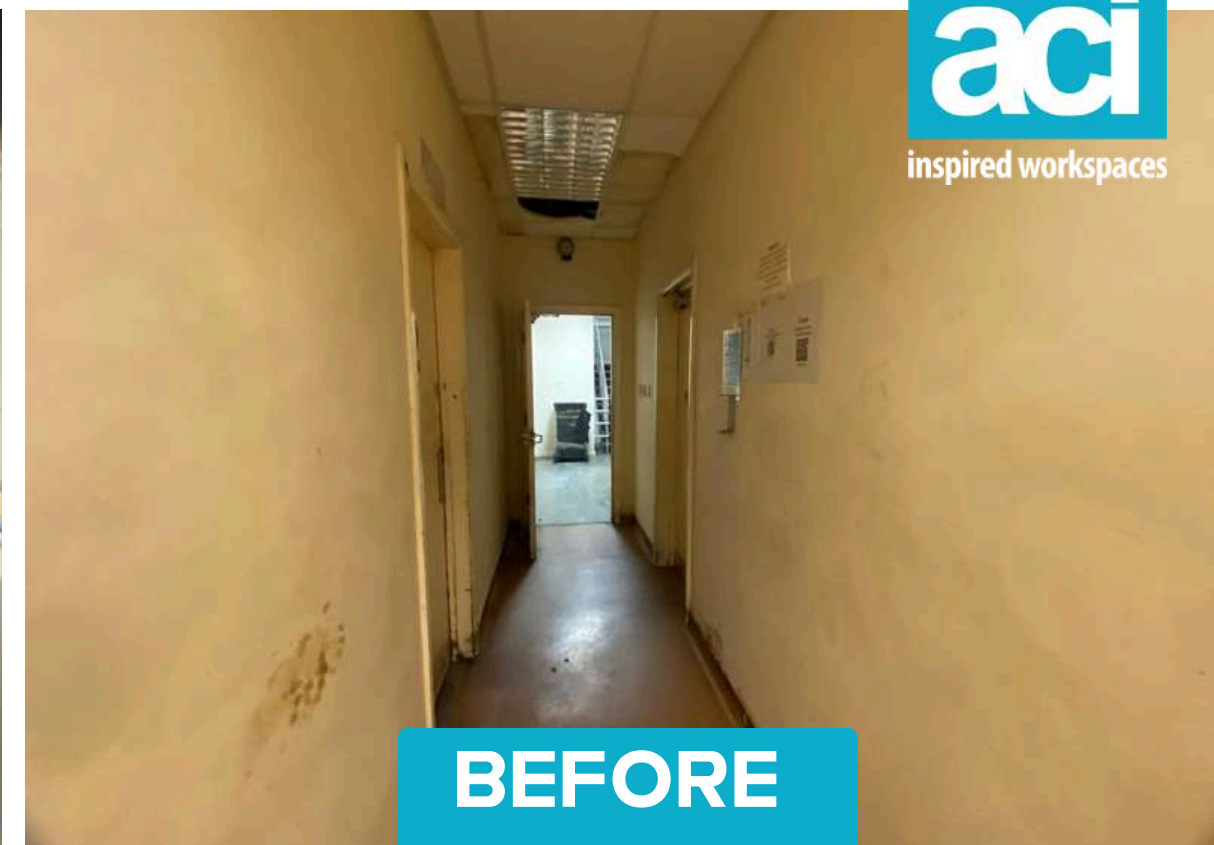
300 SQM Across Two Floors

Project Value

£400,000



BEFORE



BEFORE



BEFORE

PROJECT OVERVIEW

Leviats existing office and welfare environments were no longer suitable for the construction and industrial sectors they manufacture for. this project required new welfare facilities throughout, decorations and furniture. Alongside the internal fit-out of the ground and first floor we also relocated the entrance and blocked the existing entrance up.

Similar to other projects with the same manufacturing environment, all finishes were carefully considered to ensure they were hard-wearing and future proofed the building.

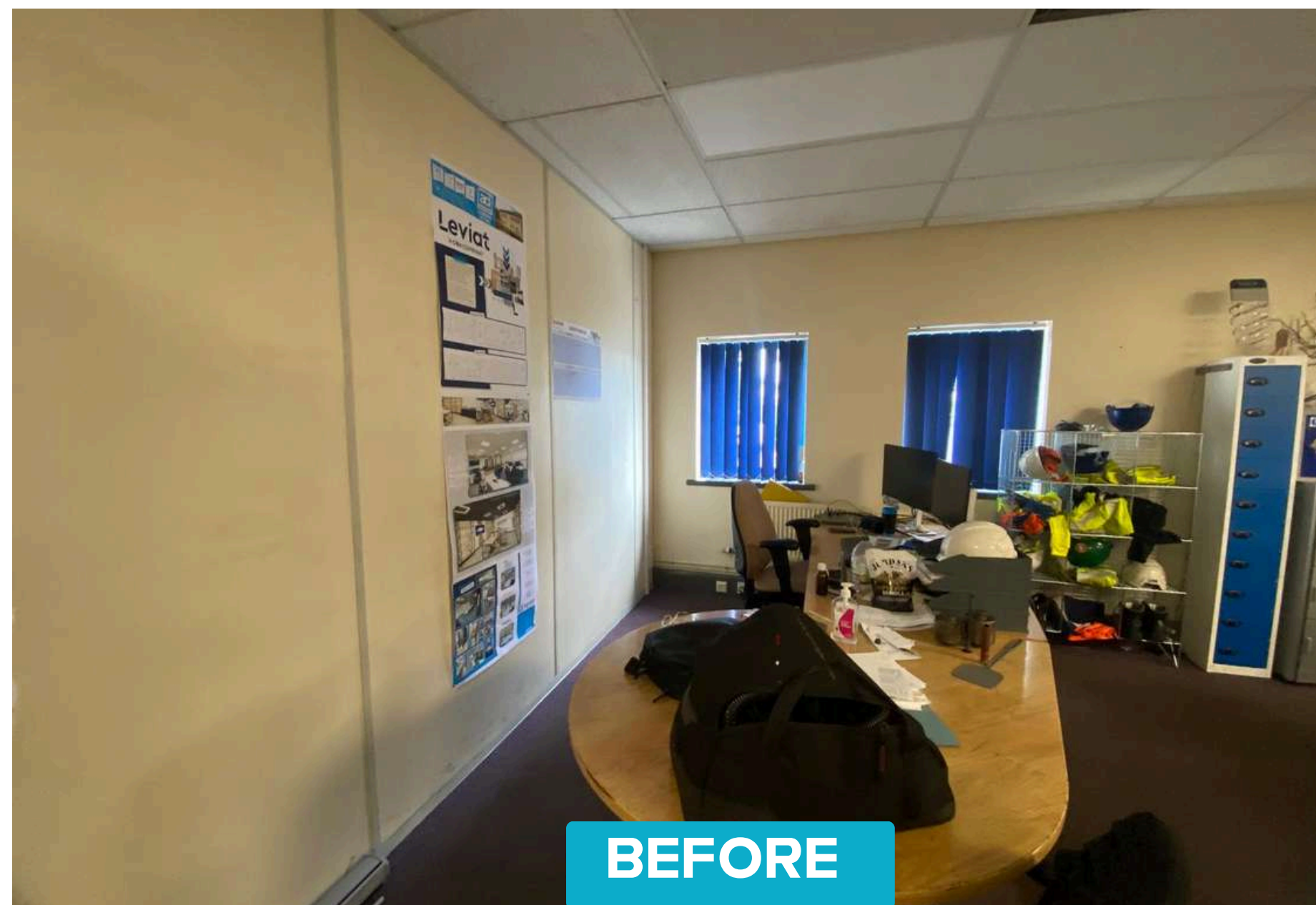


PROJECT OVERVIEW

Throughout the first floor welfare area safety flooring and half height hygienic cladding was installed as well as cladding the doors to help with the durability and suitability of the redesigned space.

The ground floor offices had LVT installed as per the clients request. All existing windows were internally painted to match the brand guidelines as well as door frames and skirting to create a modern and cohesive design.

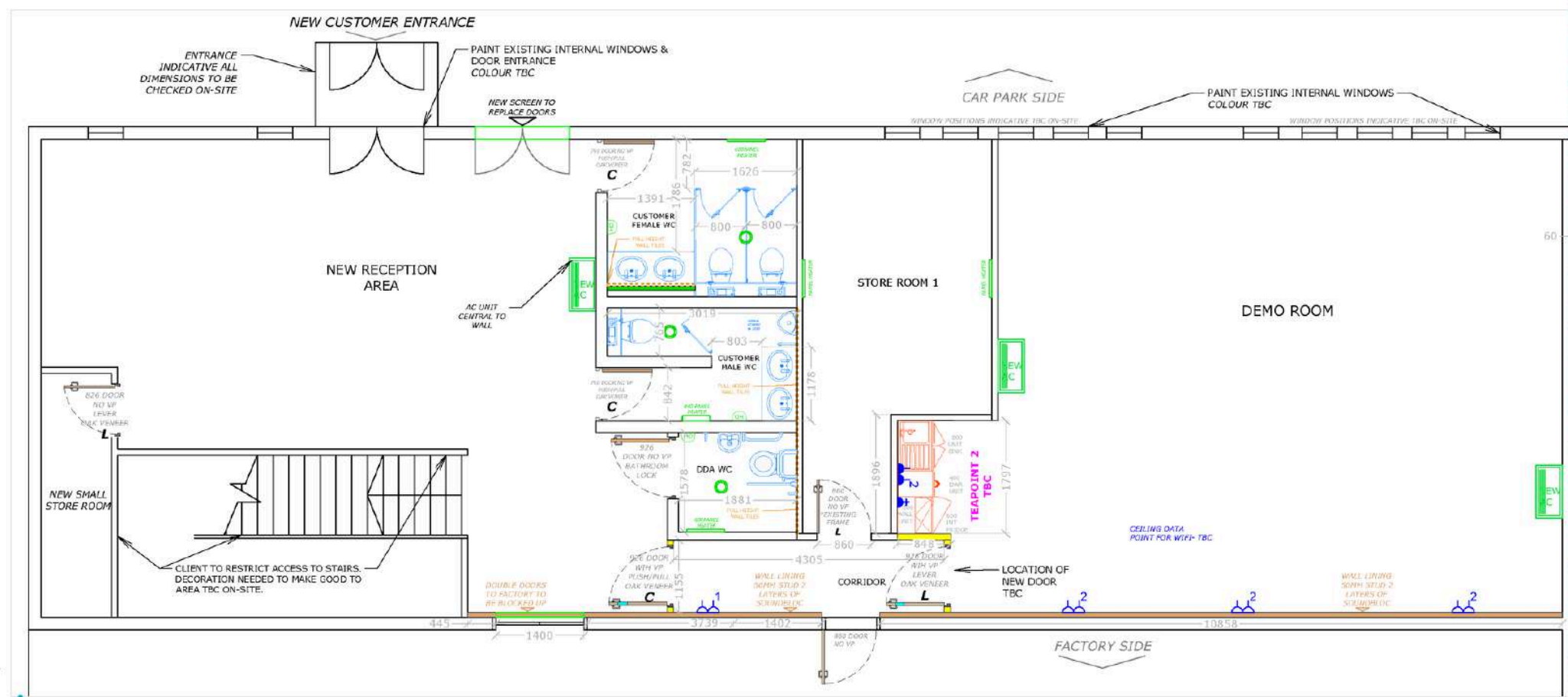
The overall design had a monochromatic scheme running throughout the offices, welfare areas and refurbished WC's.



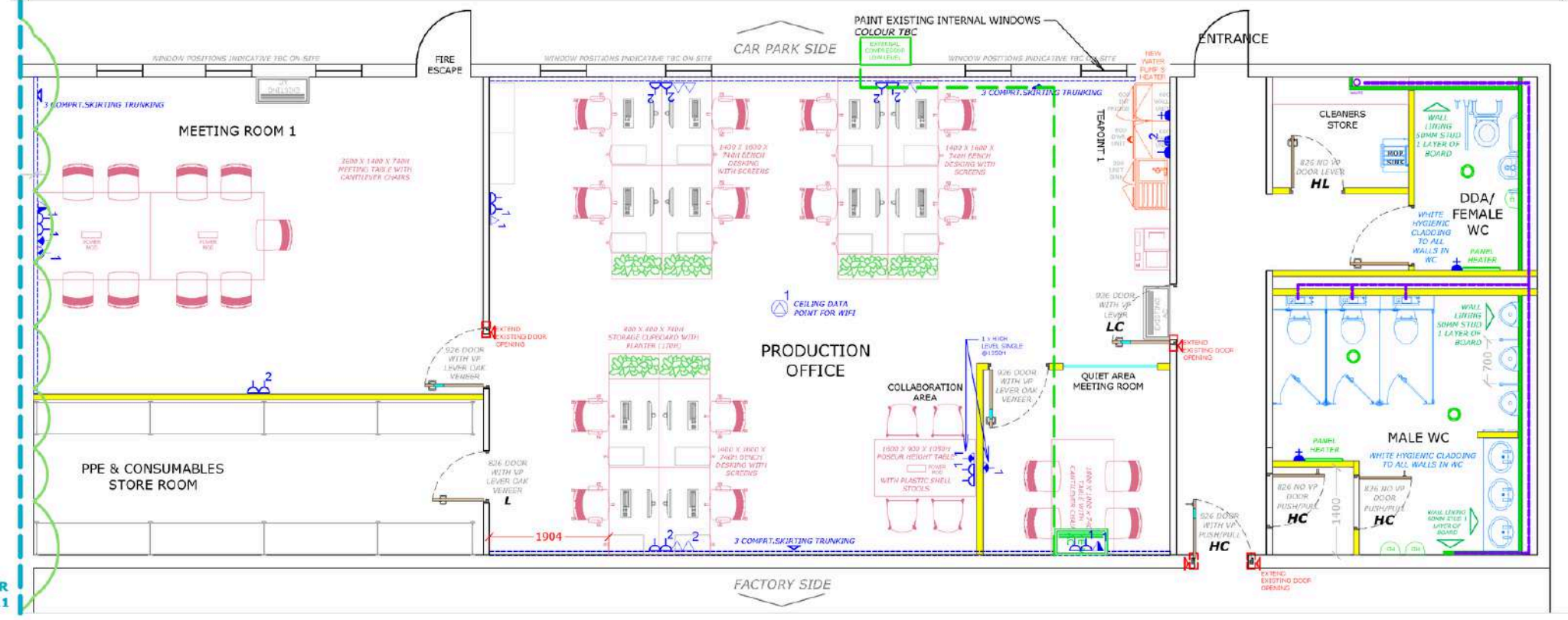
M&E NOTE
ALL NEW SINKS WILL REQUIRE NEW WATER

DOOR KEY	
ALL DOORS TO HAVE ESC. TOUCH PLATES ON PUSH SIDE	
H	HYGIENIC CLAD DOOR COLOUR - THUNDER (DARK GREY)
C	DOOR CLOSER
L	KEY & LOCK

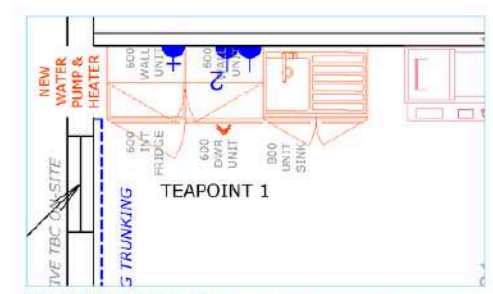
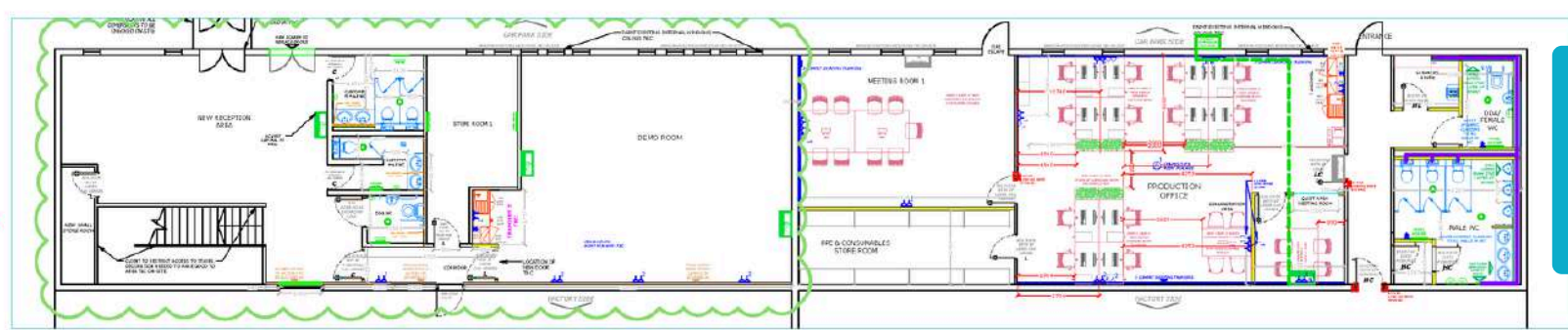
GROUND FLOOR
SCALE 1:50 @A1



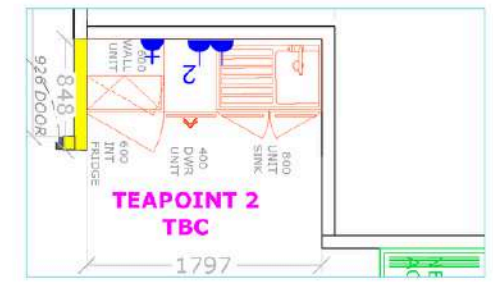
GROUND FLOOR
SCALE 1:50 @A1



GROUND FLOOR
NTS



GROUND FLOOR TEAPOINT 1- NTS
INCLUDES MATCHING 40MM UPSTAND, NEW WATER HEATER & PUMP



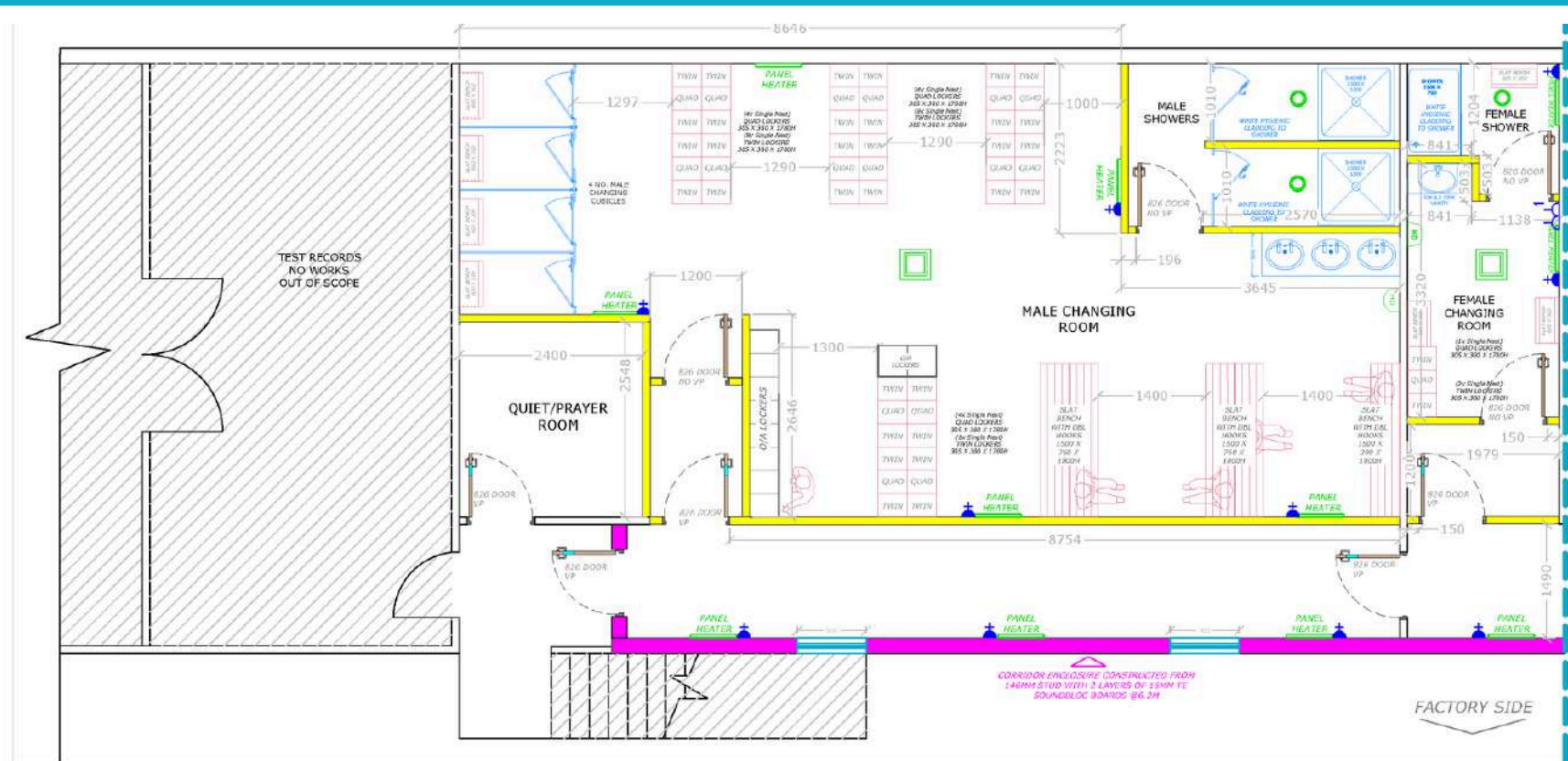
GROUND FLOOR TEAPOINT 2- NTS
INCLUDES MATCHING 40MM UPSTAND, NEW WATER HEATER & PUMP

ACI FLOOR PLAN GROUND FLOOR

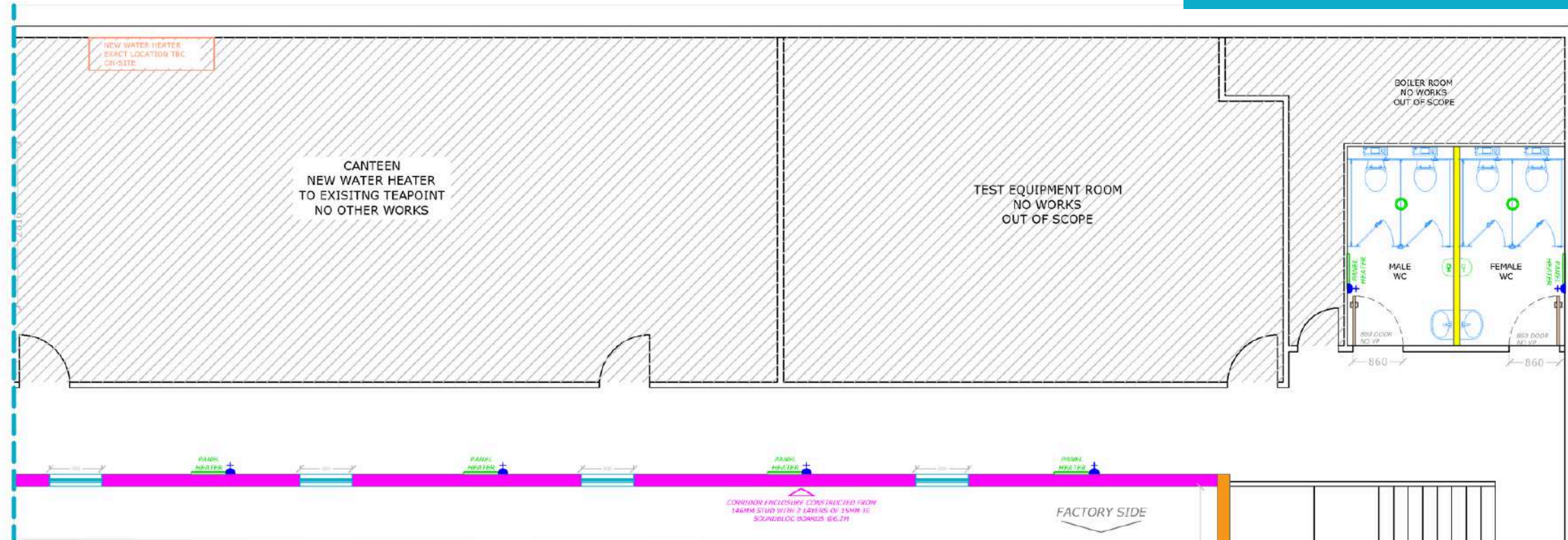
PROJECT OVERVIEW

For the welfare alteration on the existing mezzanine, we worked alongside the health and safety team carrying out various sound test to ensure the jumbo wall we were installing to create a sound barrier for the staff would meet the required sound rating

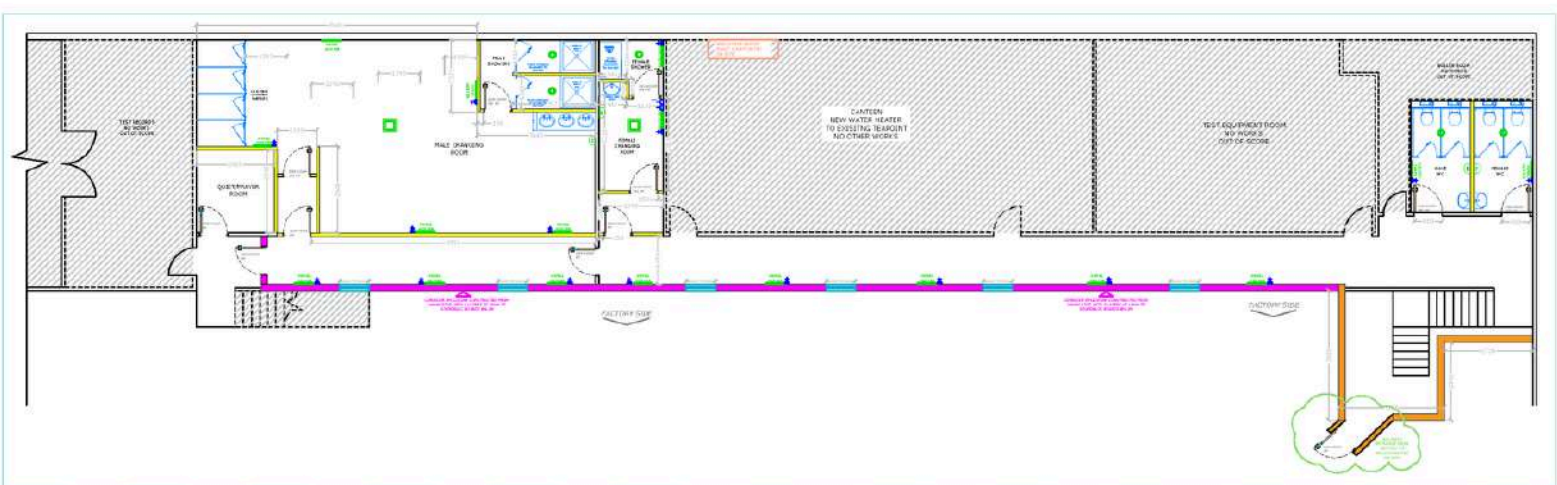
FIRST FLOOR
SCALE 1:50 @A1



FIRST FLOOR
SCALE 1:50 @A1



- PHASES**
- PHASE 1- OF WORKS
 - PHASE 2- OF CUSTOMER FACING WORKS
 - PHASE 3- PP WCs
 - PHASE 4- PP CHANGING ROOMS



FIRST FLOOR
NTS

ACI FLOOR PLAN FIRST FLOOR

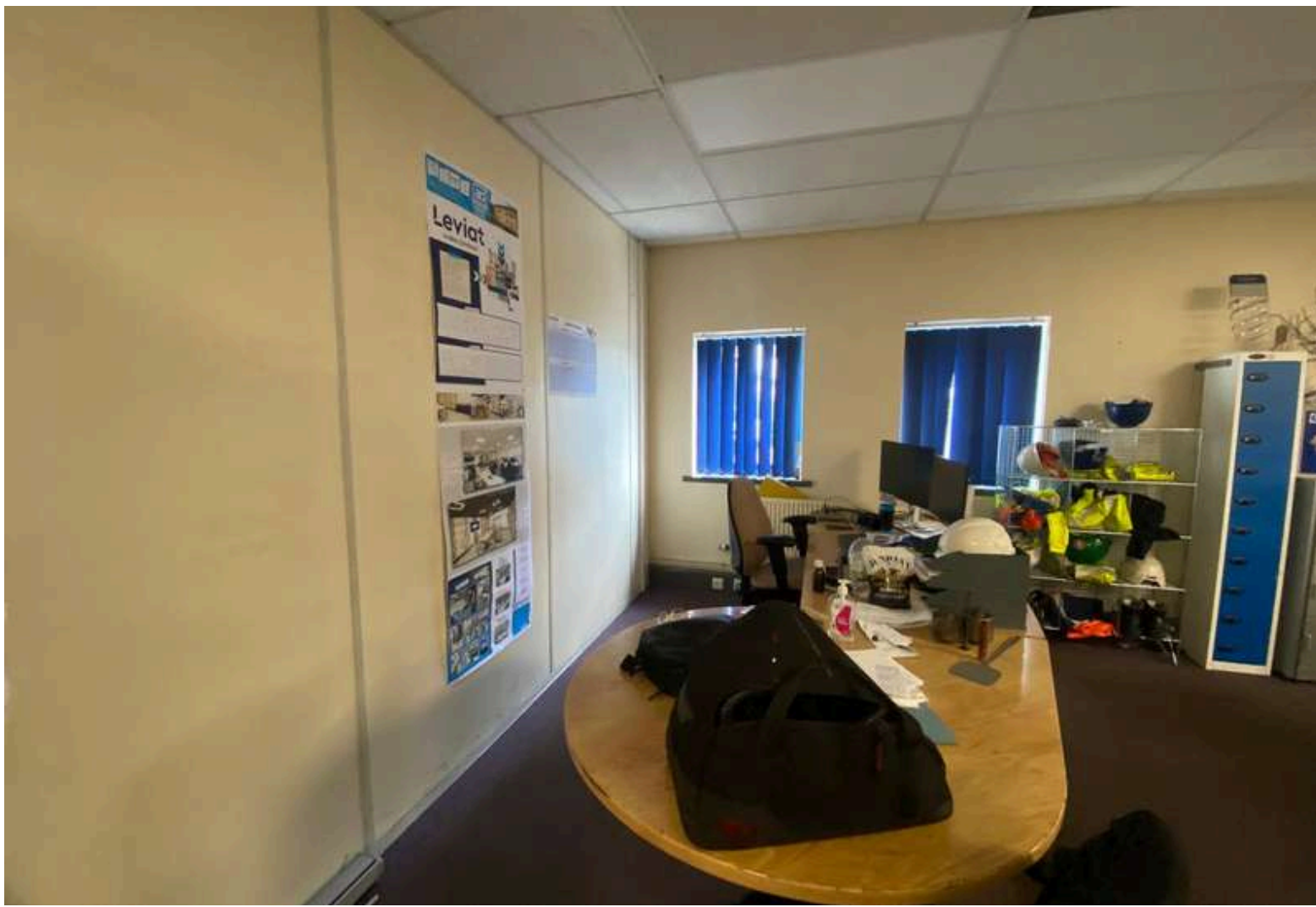




BEFORE



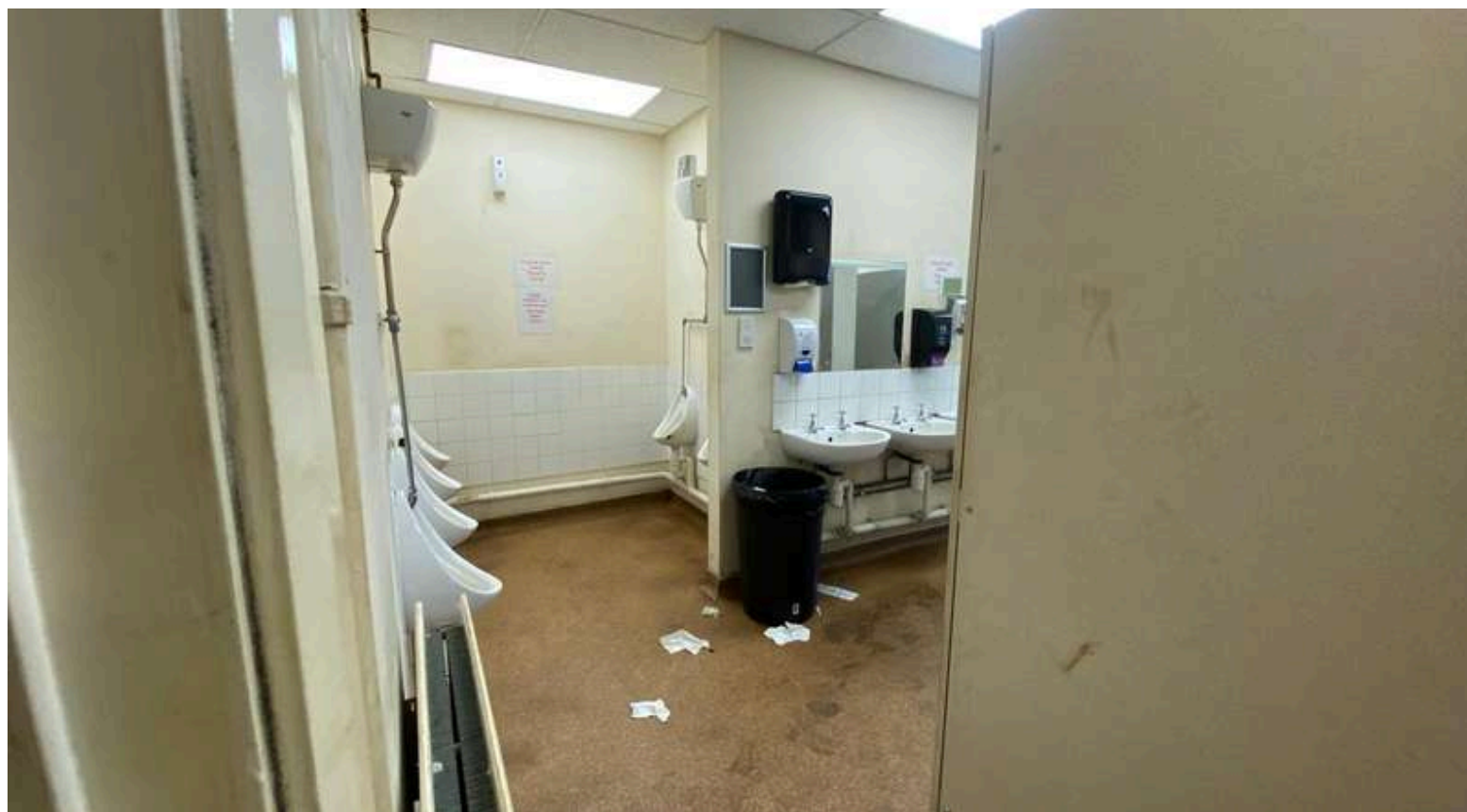
AFTER



BEFORE



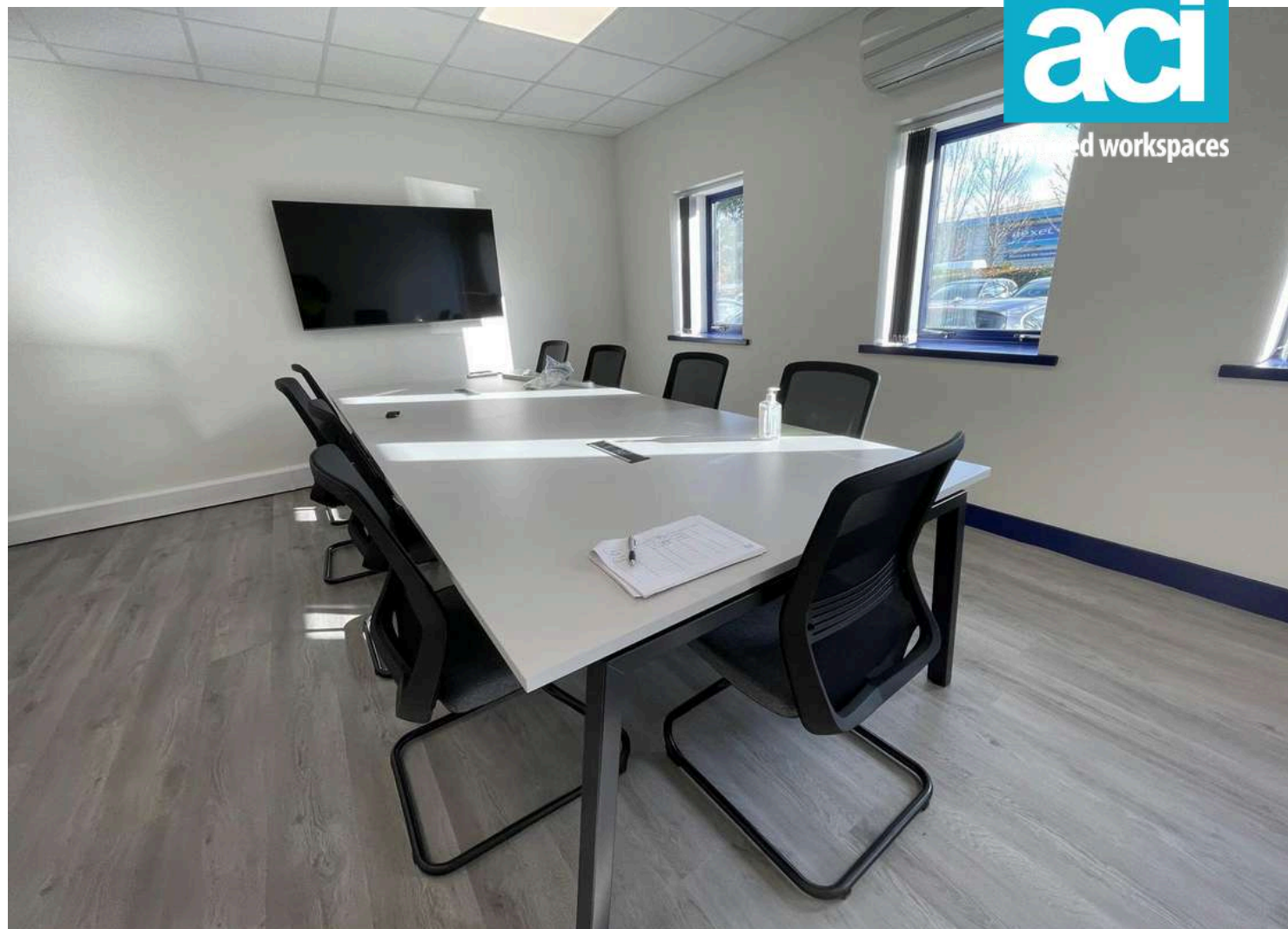
AFTER



BEFORE



AFTER





AFTER